



**Mattson
Macdonald
Young**
structural
engineers

Homeowner Assistance

We are more than willing to help homeowners with problems or questions concerning an existing condition, a discovered condition, or ideas for modifications and remodeling. However, before homeowners contact us, we ask that they consider the following:



Scheduling the Work

A good portion of the work we do is the design of commercial buildings, schools, churches, clinics, and multi-family housing projects, to name a few. Since we must keep these projects on schedule before we accept additional work, we may not be available to help with your project immediately. However, if you allow us some flexibility in scheduling the work, we can complete your project as soon as there is a staff engineer available.

The Fees for Our Work

It is often difficult or nearly impossible to provide a fixed fee or guaranteed maximum fee for the services we provide; since the full scope of our work can't be established simply by a phone conversation. We bill on an hourly basis, and this time includes the time to drive from our office to your home and back. Typical fees can range from \$500 for a relatively simple site visit and consultation to \$1,500 and substantially higher if engineering design, calculations, and drawings are needed. To help you with budget planning, we can provide an estimated range of fees for the problem or condition described prior to visiting the site. After our first site visit to observe and discuss the work, we can provide you with a better estimate of our fees.

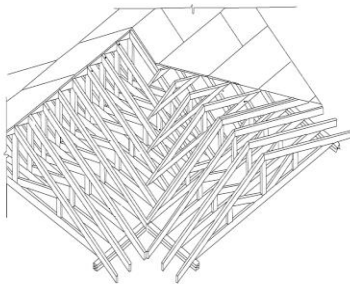


Figure 2.18a Roof Intersection with Valley Fill

"Plan Stamping"

Homeowners and contractors sometimes come to us because they need a "stamp" for their drawings. The "stamp" referred to is actually the "Statement of Certification" that licensed professionals place on a completed design to certify that it meets the requirements of the State Building Code. We do not sell a "stamp." The State of Minnesota, as well as most other states in which we are licensed, are very specific about the use of this certification, especially the requirement that we cannot certify work that was not performed by us, in our office. Many people are misled into thinking that we can review a set of drawings prepared by another engineer or designer and certify or "stamp" them. This is not allowed by law.



Advice on Problems Outside of Our Field

We are structural engineers which means we help with building frames and foundations. We cannot provide advice on plumbing, electrical, or mechanical systems. If you have questions that are outside our field of expertise we will help you find other professionals that have that knowledge.

We Want to Help You

We know that a lot of structural engineers simply refuse to accept residential projects, but we feel that homeowners or residential contractors need a professional they can call when they have a problem, concern, or want help with a planned remodeling project. And, quite honestly, we find these issues interesting and fun to tackle. We hope that after reading the information provided above and the other information concerning our firm and staff that you will give us a call to see how we can help.

