

MMY Historical Renovation Washburn Lofts

Architect
LHB + Madsen

Contractor
Kraus Anderson

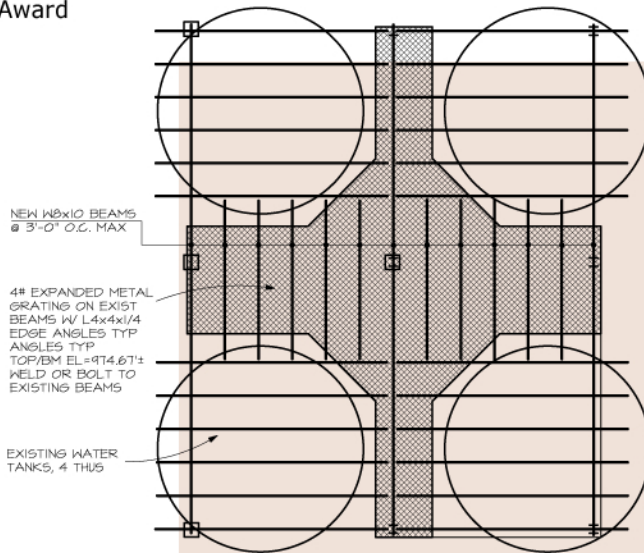
Location
Minneapolis, MN

Awards
2003 Minneapolis
Heritage Preservation
Award and the 2003
AIA MN Honor Award

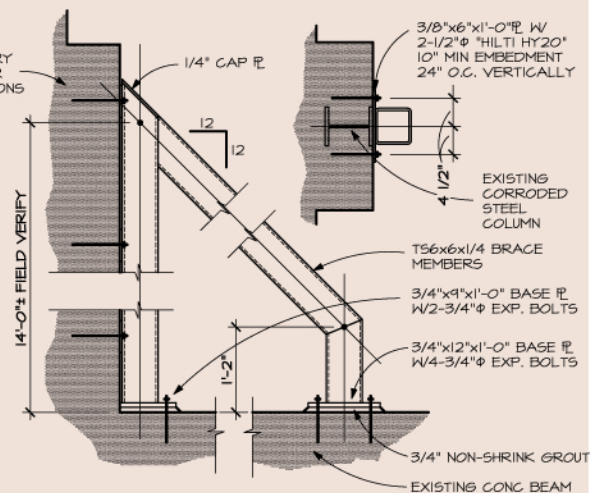
Extensive renovation of a historic mill into contemporary urban lofts.

The renovation and adaptive re-use of the Washburn Mill Annex building included extensive restoration of the exterior masonry, repair of deteriorated concrete beams and slabs and the addition of a new mezzanine level with the large first level space.

The building shared a common wall with the original Washburn Mill which was being converted into the Mill City Museum. Building Code requirements dictated that a method of supporting this building independent of the common wall be constructed.



EXISTING MASONRY PARAPET REPAIR PER SPECIFICATIONS



See the latest projects at
www.MattsonMacdonald.com

