

MMY Medical Northfield Family Hospital Clinic, Lonsdale

Architect

Mohagen Hansen
Architectural Group

Contractor

Kraus-Anderson

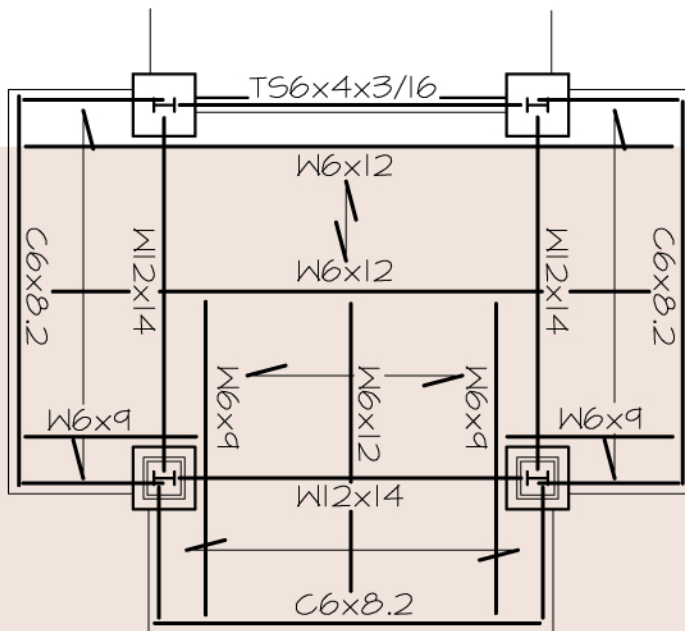
Location

Lonsdale, MN

High gable roof, clerestory windows and an entrance canopy for a medical clinic.

MMY has designed multiple clinics for the Northfield Hospital. These clinics use one-story exterior bearing walls and interior steel columns and beams for the roof support. The roof structure was designed to carry large roof top units, hanging exam lights and x-ray equipment and significant snow drifting caused by roof top unit screening.

The front entrance canopy and popped-up clerestory windows require steel framing and pre-manufactured roof trusses to create the higher gable roof. For efficiency, the lateral restraining system for this building employs exterior shear walls sheathed in plywood and with pre-manufactured hold-downs.



See the latest projects at
www.MattsonMacdonald.com



**Mattson
Macdonald
Young** structural engineers