

MMY Schools Breck School Commons Addition

Architect

Julie Snow Architects

Contractor

JE Dunn

Location

Golden Valley, MN

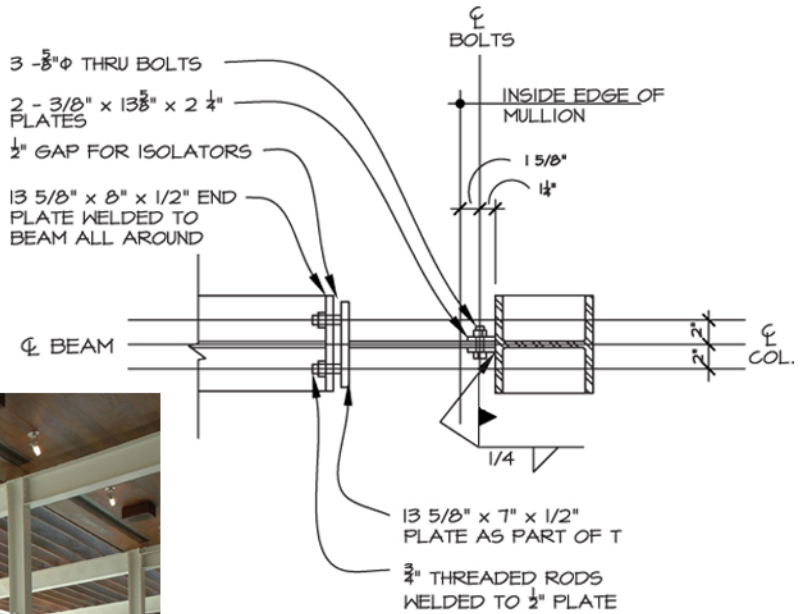
Awards

2006 AIA Minnesota Honor Award

A collaboration between architect, contractor and MMY for a school addition.

In this challenging project, MMY provided an exposed structural steel extension of the existing 1950s Commons building that created a large glass curtain wall, light monitor and thin profile vestibule.

The exterior trellis of Brazilian Ironwood is supported on steel beams that passed through the curtain wall with custom made knife-plate connections and thermal isolators. MMY was present on-site throughout demolition and construction to assist with the inevitable challenges present in an addition to an existing building.



See the latest projects at www.MattsonMacdonald.com

