

MMY Public **Bloomington Public Works Facility**

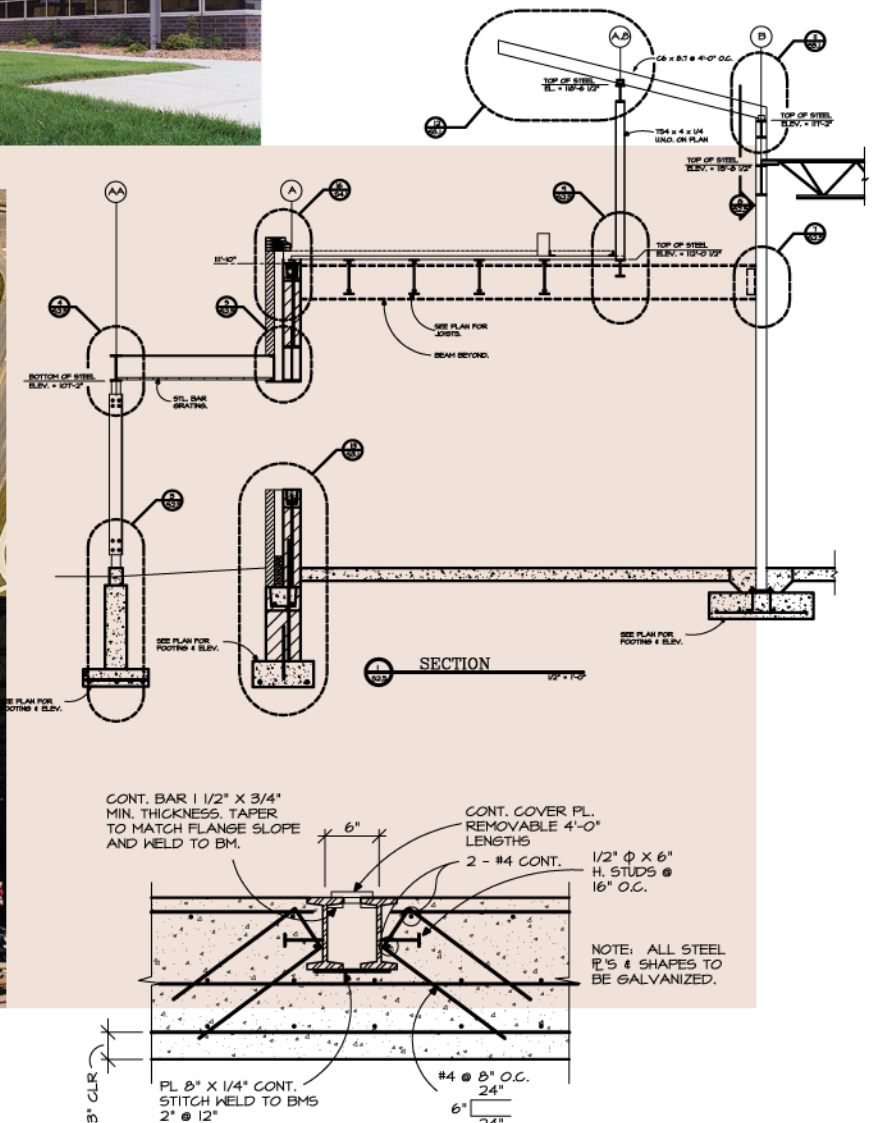
Kodet
Architectural
Group

M.A. Mortenson
Company

Bloomington, MN

This 2002 addition and remodel of the Bloomington Public Works Facility more than quadrupled the existing building's size, while lessening the impact that a complete demolition and new construction would have created.

The office expansion allowed the city's Administration and Engineering, Utilities and Maintenance Divisions to share the workspace and collaborate to the benefit of the community they serve. The new maintenance bay features a 3-ton bridge crane and solidly reinforced concrete floor with embedded steel rails to aid in the maintenance of the city's vehicles.



See the latest projects at
www.MattsonMacdonald.com

